

AIP CANADA SUPPLEMENT 107/24

TORONTO / OSHAWA EXECUTIVE AIRPORT, ON (CYOO) RWY 12/30 LAYOUT AND DEPICTION AMENDMENTS

Introduction

In 2024, Toronto / Oshawa Executive Airport, ON (CYOO) extended Rwy 12/30 and added some additional features.

Rwy 12/30 Extension and Displacement

- Rwy 12/30 has been extended and the total runway length is now 4675'
- Rwy 12 is displaced 175'
- Rwy 30 is displaced 250'

The displaced thresholds are based on the previous runway thresholds.

Rwy 30 Stopway

- A 75' stopway has been added to Rwy 30.

Rwy 12/30 Declared Distances

- Please check the NOTAMs for the most current information on Rwy 12/30 declared distances.

Rwy 12/30 Graphical Depiction

- Rwy 12/30 width is consistent throughout its entire length as opposed to the current depictions, particularly in the vicinity of each respective thresholds.

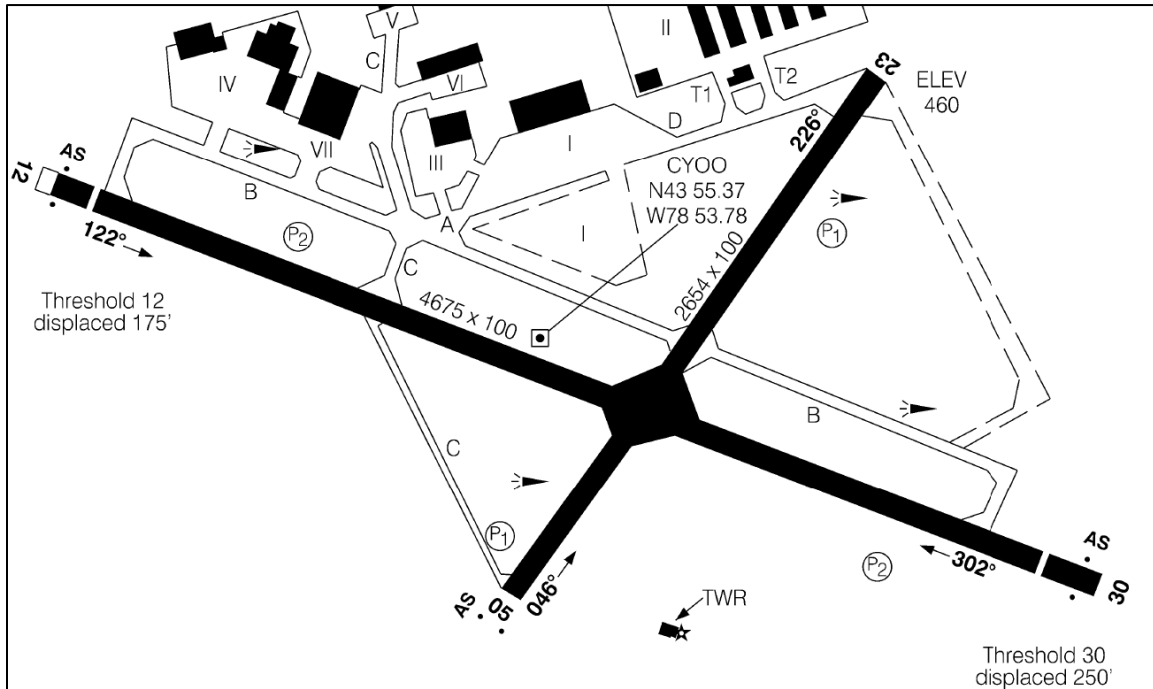


Figure 1. Addition Features

Validity

This AIP Supplement will expire when the change has been incorporated into applicable aeronautical products on 12 June 2025.

Supplementary Information

For further information, please contact:

Stephen Wilcox
 Airport Manager
 Oshawa Municipal Airport

Tel.: 905-576-8146 ext. 3858
 E-mail: swilcox@oshawa.ca