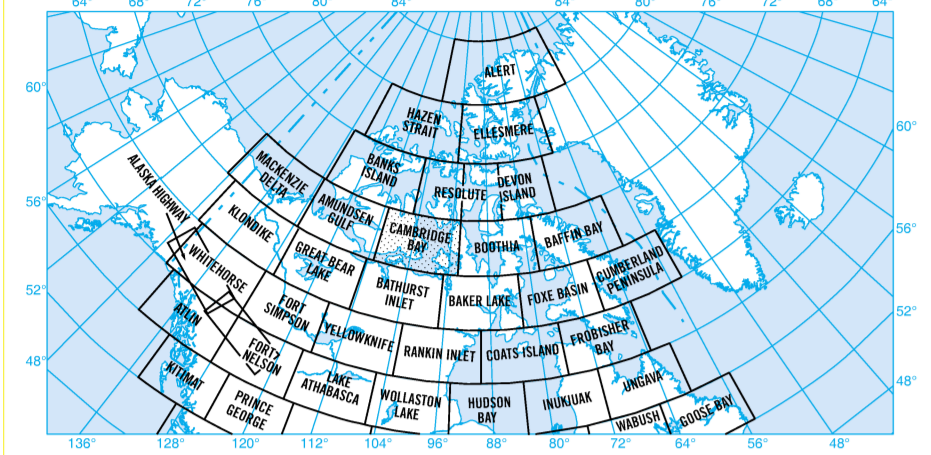


CAMBRIDGE BAY VFR NAVIGATION CHART

NOVEMBER 2024
NOVEMBER 2024
NOVEMBER 2024
NOVEMBER 2024



AERODROMES

WITH SERVICES: Land, Water, Helipad, Hospital helipad, Status unknown

WITHOUT HARD SURFACED RUNWAYS: Land, Water, Helipad, Hospital helipad, Status unknown

AERODROME DATA

NAME	TYPE	ICAO	FAA	UNICOM	COMM. CLASS	COMM. CLASS
Cambridge Bay	M	CYCB	CYCB	118.1	Class E	Class E

AIRSPACE INFORMATION

Class E Airspace: 10000 ft AGL or higher, 1000 ft AGL or higher, 1000 ft AGL or higher

Class G Airspace: 1000 ft AGL or higher, 1000 ft AGL or higher, 1000 ft AGL or higher

CAMBRIDGE BAY RADIO AIDS TO NAVIGATION

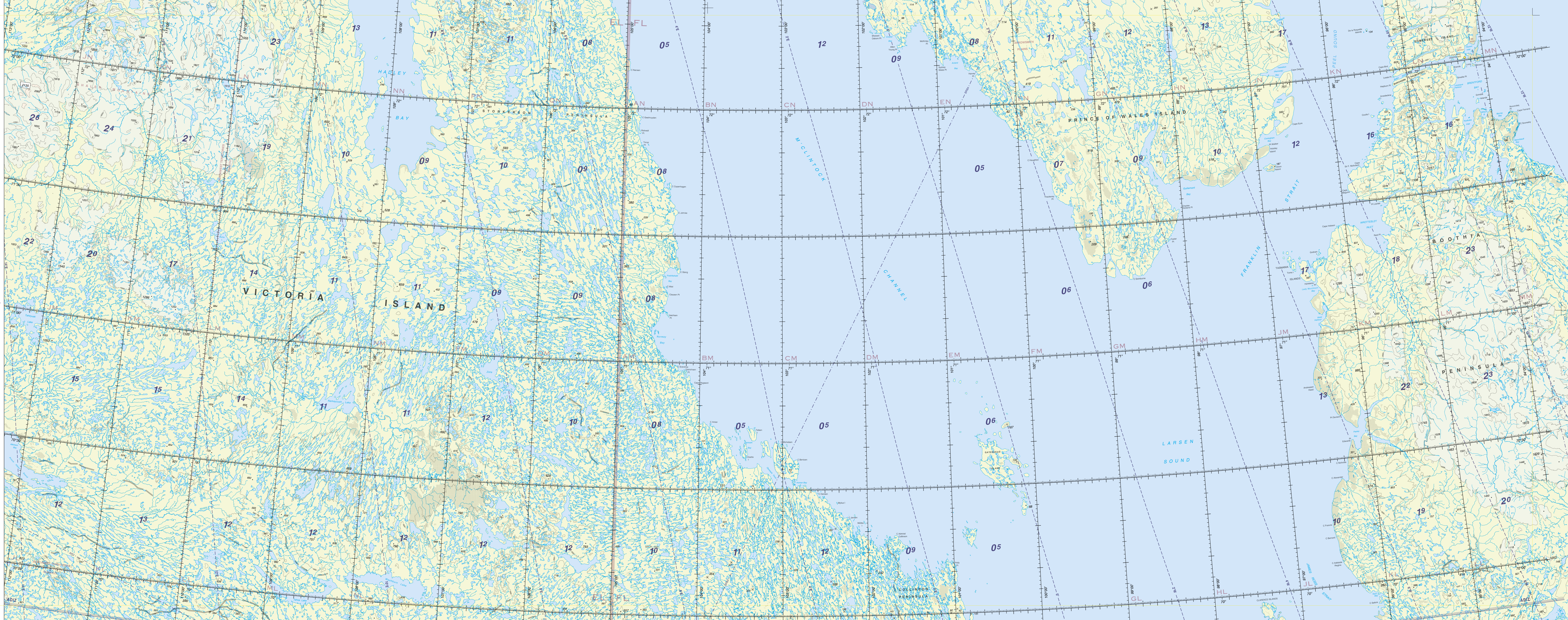
NAME	TYPE	FREQ	CLASS	IDENT
Cambridge Bay VORTAC	VORTAC	113.1	Class E	CBAY

AIR-GROUND COMMUNICATION BOXES

NAME	FREQ	CLASS	IDENT
Cambridge Bay ATIS	118.1	Class E	CBAY

MISCELLANEOUS

Obstruction symbols, lighting annotations, and other navigational markers.



38

HYPSOMETRIC TANTS AND ELEVATION INFORMATION

HYPSOMETRIC TANTS AND ELEVATION INFORMATION

HEIGHT	TEMPERATURE
1000	32.0
2000	28.0
3000	24.0
4000	20.0
5000	16.0
6000	12.0
7000	8.0
8000	4.0
9000	0.0
10000	-4.0

NOTICE: Additional and corrections for this chart are available. Send to: AIR DATA COLLECTION, PO BOX 9824 STN T CSC, OTTAWA ON K1A 0N2

Published by NAV CANADA in accordance with ICAO Annex 4 and 11 to the Convention on International Civil Aviation

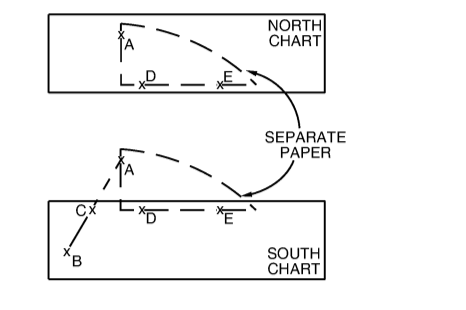
Copyright and Printing: © 2024 NAV CANADA

For additional information, please see Page Supplement (Section A)

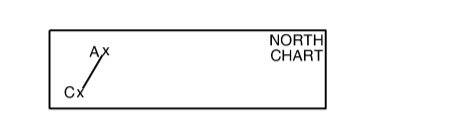
AIR 5042 • Topographic data WGS84

TO PLOT A REQUIRED TRACK BETWEEN A POINT ON THE NORTH CHART AND A POINT ON THE SOUTH CHART

METHOD A - To obtain required track A-B
STEP 1 - On a separate piece of paper draw a horizontal line A-C and draw a vertical line B-C perpendicular to A-C. Draw a separate piece of paper and draw the required track A-B. Transfer the required track from B to the edge of the chart and extend the same point C on the required track.



STEP 2 - On the north chart draw the remaining portion, C-A, of the required track.



METHOD B - To obtain required track A-B
STEP 1 - On the north chart select common point D on the edge of the chart.
STEP 2 - On the south chart draw B-E parallel to A-D and extend to length A-D. Draw a separate piece of paper and draw the required track A-B. Draw D-C. Draw portion of required track from D to point C-E. Select common point C on required track.
STEP 3 - On the north chart draw the remaining portion, C-A, of the required track.

