

BAFFIN BAY VFR NAVIGATION CHART SCALE 1:500 000

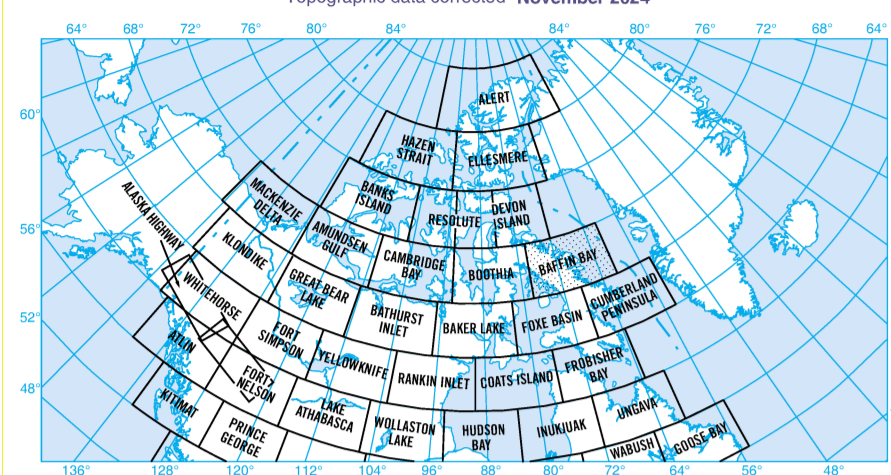


Table with 2 columns: 'WITH SERVICES' and 'OTHER AERODROMES'. It lists various symbols for airports, helipads, and other facilities.

Table titled 'AERODROME DATA' with columns for 'NAME (R)', 'ELEVATION (FT)', 'CLASSIFICATION', and 'STATUS'. It lists details for various aerodromes.

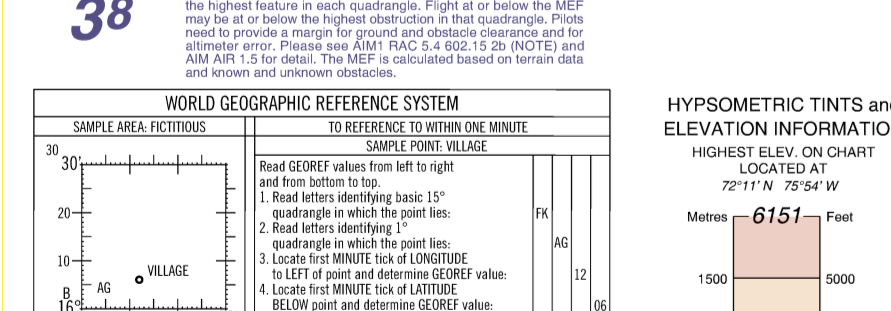
Table titled 'AIRSPACE INFORMATION' with columns for 'CLASSIFICATION', 'HEIGHT (FT)', and 'REMARKS'. It details different types of airspace and their vertical limits.

BAFFIN BAY RADIO AIDS TO NAVIGATION

Table listing 'RADIO AIDS TO NAVIGATION DATA BOXES' including VOR, VORTAC, and other navigation aids with their frequencies and identifiers.

Table listing 'AIR-GROUND COMMUNICATION BOXES' with their frequencies and call signs for various locations.

Table listing 'MISCELLANEOUS' information such as obstructions, lights, and other navigational markers.



NOTICE: Additions and corrections for this chart are requested. Send to: AIS DATA COLLECTION, P.O. BOX 604, STN. C, OTTAWA ON K1G 0Z9.

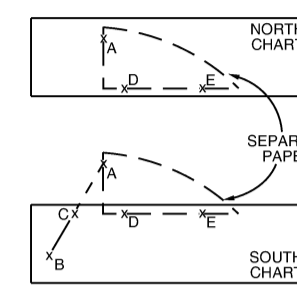
WARNING: Refer to the 'NOTICE' section for information on how to report errors and omissions.



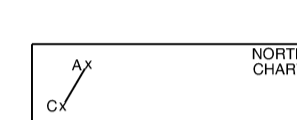
AIR 5044

TO PLOT A REQUIRED TRACK BETWEEN A POINT ON THE NORTH CHART AND A POINT ON THE SOUTH CHART

METHOD A - To obtain required track A-B
STEP 1 - Lay a separate piece of paper over the north chart so the edges of the paper pass through the two points to be connected. Draw a straight line between the two points on the paper.
STEP 2 - Place the paper on the common points on the south chart and draw the required track (A-B) on the edge of the chart. Select common point (C) on the required track.



STEP 3 - On the north chart draw the remaining portion, C-A, of the required track.



METHOD B - To obtain required track A-B
STEP 1 - On the north chart draw common point D. Plot on the A-C chart parallel to a line of the edge of the chart.
STEP 2 - On the south chart draw B-C parallel to a line of the edge of the chart. Draw A-B. The portion of required track from A to B is on the south chart. Select common point C on the required track.
STEP 3 - On the north chart draw the remaining portion, C-A, of the required track.

